

# Moist Heat Pack - HEATING UNIT

---

User Manual (Rev. 3)



**NGL-LJE-1**

## **FOREWORD**

This manual contains general instructions for operation, precautionary instructions, and maintenance recommendations for the owners and operators of this NGL-LJE-1 Heating Unit. In order to obtain maximum life and efficiency of the Heating Unit, please read this Manual thoroughly and follow all instructions prior to operating the unit

## SAFETY PRECAUTIONS



### CAUTION

- Read, understand, and practice the precautionary and operating instructions. Know the limitations associated with the Heating Unit NGL-LJE-1. Observe the cautionary and operational decals installed on the unit.
- DO NOT operate this unit in an environment where other devices are being used that intentionally radiates electromagnetic energy in an unshielded manner. Portable and mobile RF communications equipment can affect Medical Electrical Equipment.
- The Heating Unit generates, uses, and can radiate radio frequency energy and, if not installed and used in accordance with the instructions, may cause harmful interference to other devices in the vicinity. However, there is no guarantee that interference will not occur in a particular installation. Harmful interference to other devices can be determined by turning the Heating Unit on and off. Try to collect the interference using one or more of following: reorient or relocate the receiving device, increase the separation between the equipment, connect the equipment to an outlet on a different circuit from that which the other device(s) are connected and consult us for help.
- Do not use accessories other than those supplied with the Heating Unit or recommended by us. The safety of other products has not been established, and their use could result in injury to the patient.
- Never adjust the thermostat too high. The thermostat is extremely sensitive and the slightest adjustment will alter the temperature several degrees. The recommended operating temperature is 71°C-78°C ( 160F- 172F). The temperature of the water should be checked with a thermometer after every adjustment, before using the hot pack. Always allow sufficient time for the water temperature to stabilize
- The Heating Unit should not be installed above a surface that is susceptible to casual water damage.
- Always keep the water level over the top of the hot packs to avoid burning or scorching of the packs.
- Never allow the hot packs to dry after use.
- Check the water level daily as it has a natural loss due to evaporating.
- Clean the tank periodically as described in the maintenance portion of this manual.
- Check the unit periodically for signs of leaking and contact service if leaks are noted.
- Always replace Heating Unit hot packs as soon as they show signs of wear.
- If the unit is to be left unattended for a period of time, unplug the unit, remove the packs, empty the water and clean the tank.
- Do not move the Heating Unit while filled with heated water. Tipping over could result in burns to the users or others.
- Always unplug the Heating Unit from power source before attempting to empty water from unit.
- Always destroy and replace the hot pack which are exposed to contamination: hazardous or cleaning materials, bodily fluids, mold, etc.

- This unit should be operated, transported and stored in temperature between -40 °C to +70 °C and no requirements for atmospheric pressure, with relative humidity ranging from 10% - 100%.
- Treatment time should not exceed 30 minutes.
- DO NOT retrieve hot packs from tank or replace hot packs in tank with unprotected hand.
- Avoid direct contact with mounting rack in tank.
- Always wrap hot pack with towel or terry cover before handling or applying to patient.
- Constantly monitor hot pack application to ensure that the skin is not becoming too hot.
- Damage to skin can occur from exposure to extreme hot or cold. Note instructions for proper use.
- DO NOT apply over insensitive skin or in the presence of poor circulation.
- Never lay or sit on top of the hot packs.
- DO NOT use hot packs directly over cuts, abrasions or wounds.
- Consult health care professional before using hot packs on non-communicative individuals.
- Exercise extreme caution when using hot packs on non-communicative individuals.



## WARNING

- Grounding the Heating Unit NGL-LJE-1. Make certain the unit is electrically grounded by plugging into a hospital grade electrical outlet with a ground terminal receptacle. Follow the National Electrical Code.
- The water temperature in the Heating Unit is approximately 75°C , and the water scalding temperature is approximately 49°C .
- Care must be taken when operating the Heating Unit adjacent to or stacked with other equipment. Potential electromagnetic or other interference could occur to this or other equipment. Try to minimize this interference by not using other equipment in conjunction with it.
- The Heating Unit should be placed on a smooth, level surface. The surface should support up to the Filled Weight (weight of heating unit filled with water) .
- Use only accessories that are specially designed for the Heating Unit.
- Periodically inspect unit for signs of damage and pitting during regular cleaning intervals, as described in maintenance portion of this manual.
- DO NOT apply hot pack directly to skin, use terry cover or a towel for skin protection.
- Individuals with circulatory problems should consult with a physician before using this product.
- DO NOT sit or lie on the hot pack.
- DO NOT add chlorine additive to water.
- DO NOT allow hot pack to come in contact with hydrocarbons.

### **Detailed Operating Instructions: HOW TO USE:**

1. After it is well placed, please wipe the inner and outer surfaces of the container gently with a wet cloth to remove the protective oil and keep the container clean.
2. When you use the unit, please fix it on a fixed platform. Then, inject clean water into the unit below the maximum water level. (See below guideline for the maximum water level )
3. Connect the power supply and monitor water inside the tank that starts to heat up.

## NOMENCLATURE

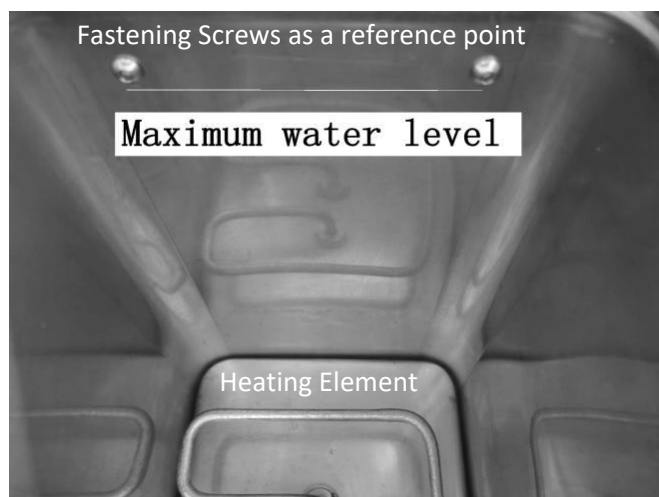
**When connected in power, both the green and red lamp will light up.**

**PILOT GREEN LAMP**, When it illuminates, this indicates that main power is connected, the switch is on and the unit is operating.

**PILOT RED LAMP**, When it illuminates, the unit is in heating state. When water temperature has reached the set temperature, this Red Lamp will automatically turn off leaving only the Green Lamp to light up continuously.



**Maximum Water Level:** If water level is too high, water may overflow and leak. The below water level indicator acts as a guide line for the maximum water level.



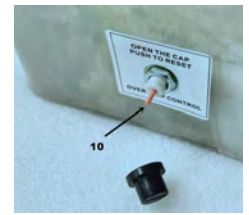
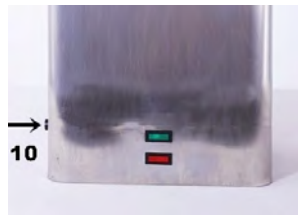
## NOMENCLATURE

1. Lid
2. Lid Hinge Fastening Nuts
3. Heating Element
4. Overtemp Thermostat (Hidden, Beneath the Unit)
5. Thermostat, Hydraulic (Hidden, Beneath the Unit)
6. Heating Element Cover Bracket (Obsolated )
7. Thermostat Intensity Control
8. AC Mains Power Cord
9. Power Cord Connector
10. Reset Overtemp Adjustment Lever
11. Pilot Lamp, Red
12. Pilot Lamp, Green

**Temperature Setting: The temperature of the heating unit has been well preset to 71°C - 78°C to the best condition for moist heat pack, therefore no further setting is required when use.**

When temperature has been set too high from the lever or vibration is violent during transit or else, the machine will trigger a safety circuitry and will automatically power off. At this point, the Over-Temp Lever (10) will be bounced out. When water at the tank has been replenished in a condition ready to run, the Lever (10) can be manually pushed back to the original inside position. This is to reset the Unit to re-activate it again. Afterwards, you can monitor the Unit that can operate normally with temperature starts to increase up to the preset temperature limit.

### Reset Overtemp Lever (10):

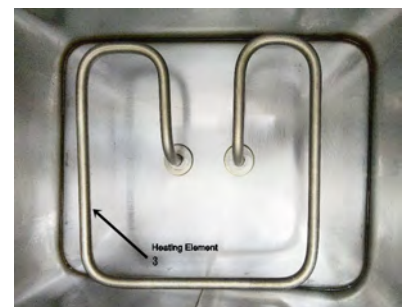


### The below temperature setting is for reference only.

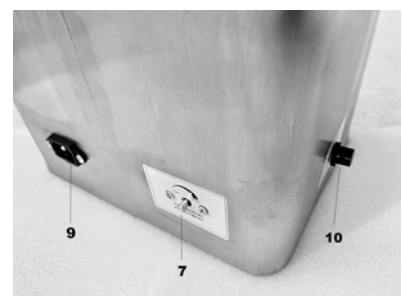
Thermostat Intensity Control Lever (7): Turn clockwise to heat it up and counter clockwise to cool it down. Highest temperature ( clockwise) can be set at about 78C (172F), and lowest (counter clockwise) is set to cut off the heating of the Unit and shut it down.



Inside View  
(3) - Heating Element



Rear View -  
Lower Tank  
Portion



NOTE: NGL-LJE-1 Model shown above

## TECHNICAL SPECIFICATIONS

### NGL-LJE-1 Model

• Power Supply	200 - 250 VAC
• Rated Frequency	50 Hz
• Power	1000 W
• Rate Fuse	15 Amp
• Tank Capacity	15 L
• Approximated Filled Weight Temperature (Preset)	21 Kg
• Cut-out Temperature	71°C-80°C
• Heat Up Time to 75 °C	90°C
• Cool Down Time from 75°C	2 Hours
• Dimensions	1 Hour
• Export Packing Dimensions	41cm (H) X 29 cm (L) X 20 cm (W)
• Product Weight	43.5cm (H) X 35.5 cm (L) X 24.5cm(W)
• Shipping Gross Weight	4.74 Kg
• Casing Material	6.02 Kg
• Caster Wheels	Stainless Steel 304
	No (Stationery Unit)

**The manufacturer reserves the right of changing or upgrading the design of the Heating Unit without prior notice.**

**User Manual (Rev. 3)**