

lovon®

not a manufacturer only



Company Profile



Established in 2010, Tovon Group, located in Taizhou, Zhejiang, China is specialized in manufacturing and designing of various special hardware and module devices. We are committed to bring precision machining, sheet metal fabrication and welding integration solution to consumer electronics, industrial, instrumental, medical and transportation where high mix low to medium volume and high quality are required.

In order to meet the demand on terminal original design manufacturer (ODM), original equipment manufacturer (OEM) , branded-customer design and development of hardware and device market as well as quality of manufacturing , Tovon Group delivers some dedicated solution s, follows operational and service philosophy on taking responsibility and constantly improvement.

We continue to follow our policy to keep growth in a cautious and steady pace whilst all customers' expectation are met.

Tovon Group ensures our product capability and reliability.. With strictly quality control, we provide one-stop-shop to comply with customers satisfaction. We are committed to bringing beneficial to client's and their customers.

Facility Overview

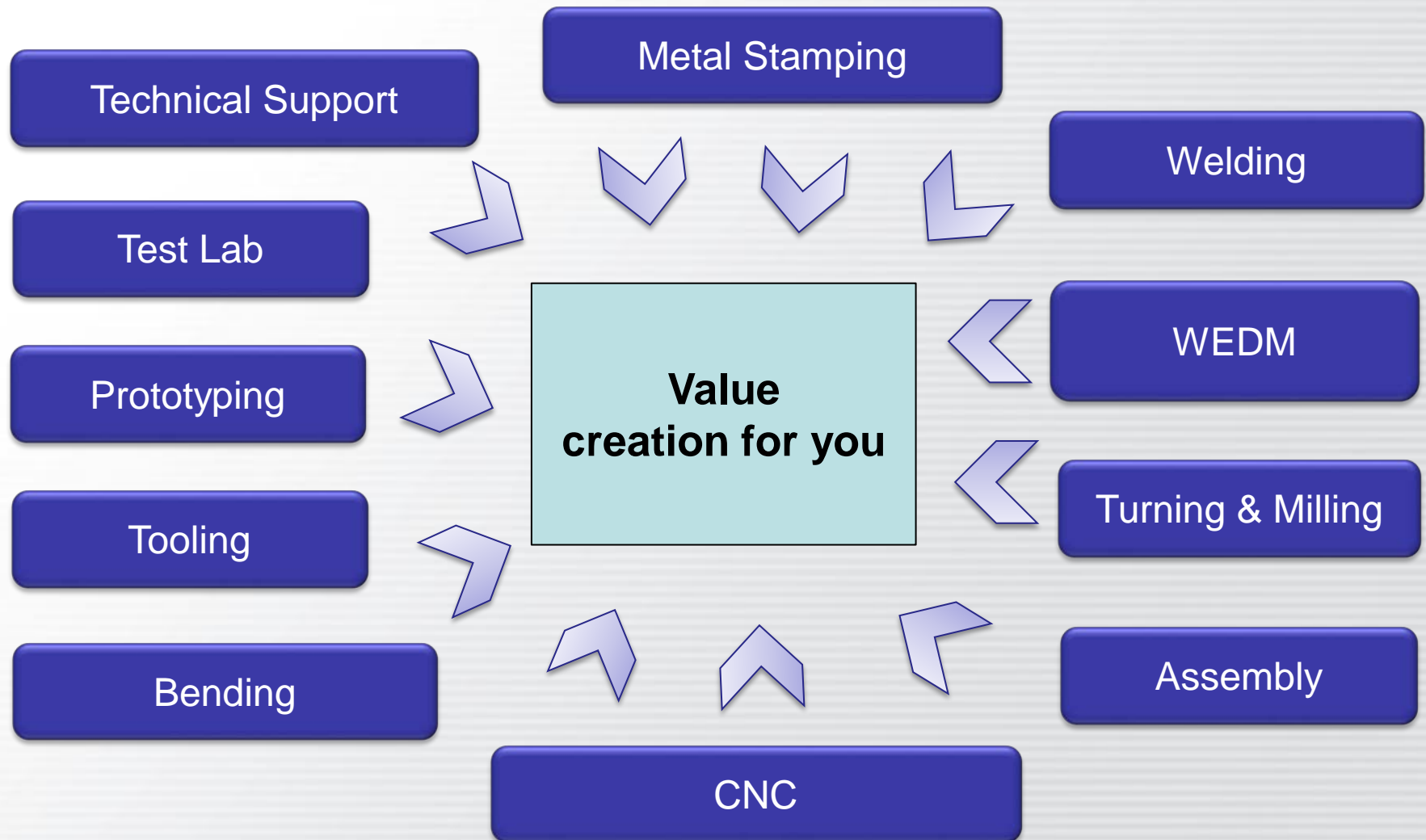
- Strategically located - easy accessibility to Ningbo port and Hangzhou Xiao Shan International Airport.
- Building space: 5000 square meters
- Total number of staff: 72
- Manufacturing, design and engineering capabilities



Total Solutions Provider



Manufacturing Capabilities Overview



Manufacturing Capability – Metal Stamping

- Various tonnage mechanical and hydraulic metal stamping presses

| Stamping Machine Type | 5 Tons | 10 Tons | 40 Tons | 80 Tons | 125 Tons | 200 Tons |
|-----------------------|--------|---------|---------|---------|----------|----------|
| Quantity | 10 | 4 | 3 | 2 | 1 | 2 |

- Single, compound, and progressive die technologies
- Automatic feeding stamping



Metal Stamping

Welding

CNC Center

Turning & Milling

Bending

WEDM

Tooling

Prototyping

Manufacturing Capability – Welding

- Various welding equipment's;
- Experienced welding technicians



Metal Stamping

Welding

CNC Center

Turning & Milling

Bending

WEDM

Tooling

Prototyping

Manufacturing Capability – CNC Center



not a manufacturer only

- CNC Center – for those products with high precision, complicated shape or structure, high and consistent quality level.



Metal Stamping

Welding

CNC Center

Turning & Milling

Bending

WEDM

Tooling

Prototyping

Manufacturing Capability – Turning & Milling



not a manufacturer only

- Single Spindle CNC Lathes and Milling machines for machining parts with relatively high precision requirements.



Metal Stamping

Welding

CNC Center

Turning & Milling

Bending

WEDM

Tooling

Prototyping

Manufacturing Capability – Bending



not a manufacturer only

- For sheet metal bending;

Metal Stamping

Welding

CNC Center

Turning & Milling

Bending

WEDM

Tooling

Prototyping



Manufacturing Capability –WEDM



not a manufacturer only

- Total 7 WEDMs for rapid prototype sample preparation and internal tooling manufacturing.



Metal Stamping

Welding

CNC Center

Turning & Milling

Bending

WEDM

Tooling

Prototyping

Manufacturing Capability – Tooling



not a manufacturer only

- Full service tool room capable of designing, building, validating, servicing and maintaining dies, molds, tools, jigs and fixtures



Metal Stamping

Welding

CNC Center

Turning & Milling

Bending

WEDM

Tooling

Prototyping

Manufacturing Capability – Prototyping

- In-house prototyping capability for key manufacturing processes enables rapid response to meet customer requests and support new product development
- Utilizes various CNC, tool room and production equipment to meet requirements



3D Model



Prototype

Metal Stamping

Welding

CNC Center

Turning & Milling

Bending

WEDM

Tooling

Prototyping

Quality Management

- ISO9001:2008 certified
- Incoming quality control
- In-process quality control
- Out-going quality control
- Document system management
- Response to customer complaints

Test Lab

- Testing of new, existing and in production products to ensure design and customer requirements are met
- Tests include:
 - Calibration
 - hardness test
 - Salt spray test
 - Lifecycle
 - Coating thickness
 - Tensile force

Test Lab

toyon®

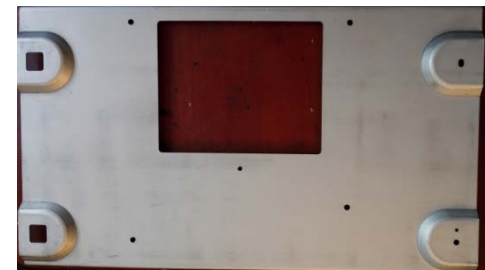
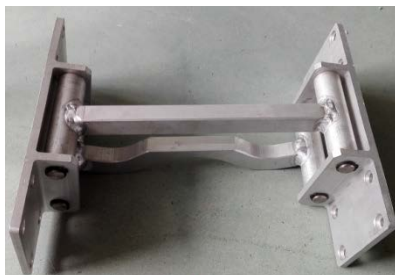
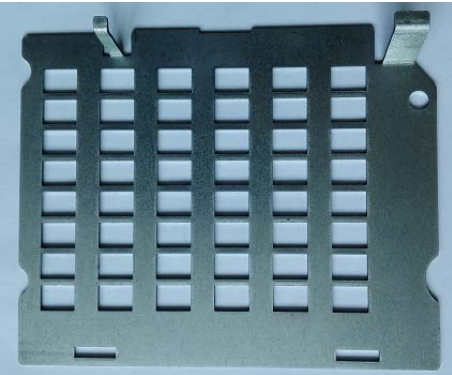
not a manufacturer only



Typical Products

lovon®

not a manufacturer only



Typical Products

tovon®

not a manufacturer only



Tovon Confidential

Summary



Core Values We Are Having ...

- One-stop Shop
- Strong Engineering and Manufacturing Capabilities
- Seamless Communication
- Quick Response Speed
- Continuous Improvements

THANK YOU!